

A wireframe graphic of a car's front end is shown on the left, with glowing white and yellow lines. On the right, a vertical rectangular graphic represents a charging station, featuring a yellow lightning bolt icon and a white charging cable that loops around. The background is dark with a grid of white dots and lines.

# Residual current sensors

Infrastructure sensors for charging electric vehicles

A wide range of electrical safety solutions developed specifically for electric vehicle charging stations and IC-CPDs. The components are designed to be seamlessly integrated into the electronic control systems of electric vehicle safety equipment (EVSE).



**benvac®**

Plug&Play, easy to use,  
sensing module for residual  
current monitoring



e. g. RCMB121

**Chip-Set**

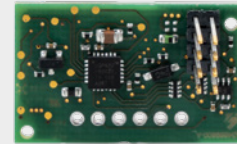
Set of components for cost  
optimised residual current  
monitoring



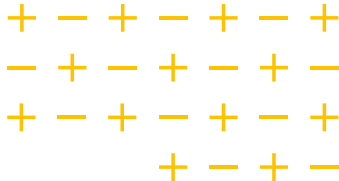
e. g. RCMB104 Chipset

**PCB-Module**

Highly flexible piggyback  
PCB design for residual  
current monitoring



e. g. RCMB104



**Bender GmbH & Co. KG**

Londorfer Straße 65  
35305 Grünberg  
Germany

Tel.: +49 6401 807-707  
emobility@bender.de  
www.bender.de