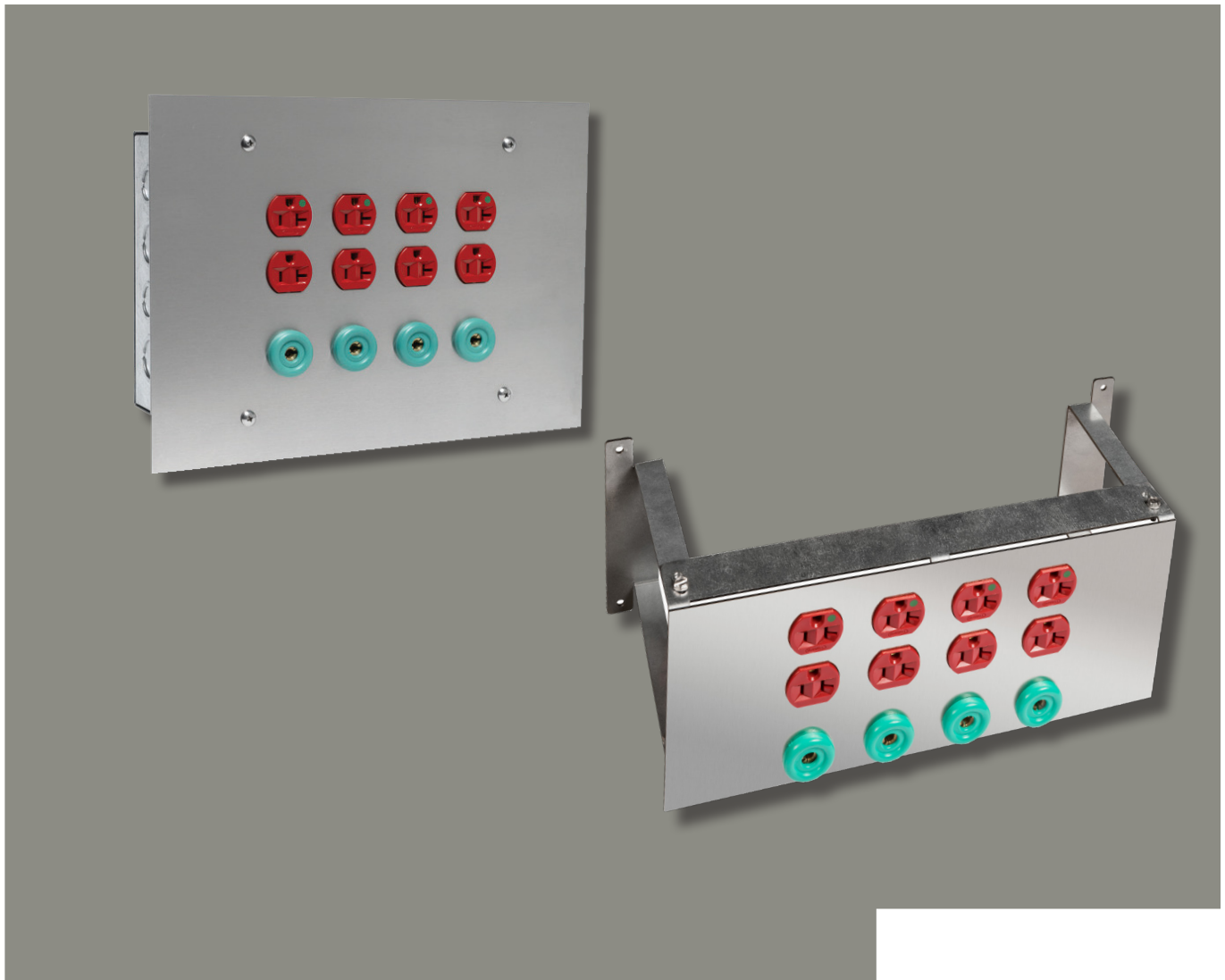


---

# Ground Power Modules

Accessories for Healthcare Facilities



## Product Description



GPM-F4DR4

Bender's Ground Power Modules (GPM) provide a combination of hospital grade receptacles and/or ground jacks to satisfy the power requirements of any healthcare facility. With a wide variety of mounting options, GPM's can be installed in virtually any location. They may also be provided without any receptacles or ground jacks to serve as a centralized location for all grounding conductors. Ground and power modules are designed in strict compliance with **UL467**, **UL50**, the **NFPA 70** (National Electric Code), and **NFPA 99**.

**Front Trim** - The front trims are constructed of 14 gauge 304 stainless steel with a brushed finish to suit the aesthetics of a clean healthcare facility. Trims will come with pre-cut holes and factory installed receptacles and/or ground jacks. The assembly allows for receptacles to be swapped out in the field if necessary. Different trim assemblies with various receptacles can also be installed at a later time.

**Backbox** - The backbox is constructed of 14 gauge galvanized steel that is designed to protect incoming wiring to receptacles. Backboxes are available in both flush and surface mount options. Surface mounted backboxes will be finished with an Ivory color powder coat. The backbox can remain mounted in or on the wall indefinitely as trim assemblies can be swapped out to meet the needs of your facility.

**Receptacles** - Bender offers a wide range of NEMA rated, hospital grade receptacles and/or ground jacks to meet your power requirements. Options range from single, duplex, and high voltage receptacle with amperage ranged up to 60 Amps.

**Ground Bus** - GPM modules customized on a faceplate are provided with a ground bus. The ground bus is constructed from highly conductive metal bar stock. The assembly contains minimum nineteen #14-4 screw connections for the attachment of grounding conductors. It also has one #4-2/0 lug for the system grounding conductor. Additional ground bus configurations and materials are available upon request.



GPM-F0NNO

### Applications

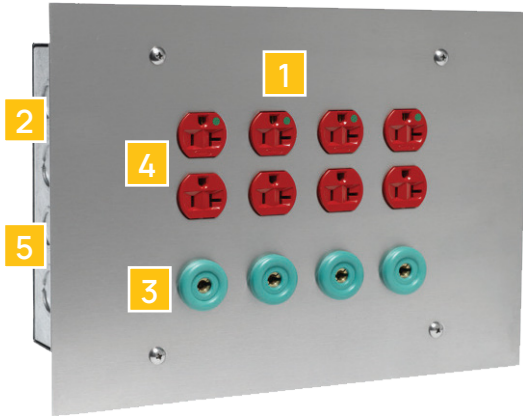
- Wet Procedure Locations
- Coronary Care or Intensive Care Ward
- Operating Rooms
- Any location where Isolation Power Panels are used

### Features

- Various receptacle and/or ground jack options
- 20 to 60 Amp rated receptacles available
- Integrated 18 Pt ground bus with main lug
- Available in flush or surface mounted options
- 304 Stainless Steel Brushed Finish
- Durable galvanized Steel backbox construction
- Field replaceable receptables/ ground jacks
- Custom configurations available upon request

## What's Included

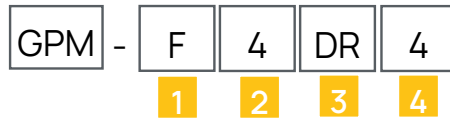
(Example Part Number: GPM-F4DR4 and Backbox B120804)



1. Stainless steel faceplate, 14 GA, #4 brushed finish, 14" W x 10" H
2. Backbox, galvanized steel, 16 GA, 12" W x 8" H x 4" D
3. Hospital grade, Twist to lock, 30A Ground jacks
4. Hospital grade, NEMA #5-20R Duplex receptacle
5. Ground bus, 20 points (inside the backbox)

\*Note: Backboxes are ordered separately

## Ordering Information



- 1 Mounting Type F or S**  
**F:** Wall Plate, Flush Mounted  
**S:** Wall Plate, Surface Mounted

- 2 Quantity of Ground Jacks**  
**0:** Zero      **6:** Six  
**2:** Two      **8:** Eight  
**4:** Four

- 3 Receptacle Type**  
**NN:** No Receptacles  
**DR:** NEMA 5-20R Duplex, Red  
**SI:** NEMA 5-20R Single, Ivory  
**DI:** NEMA 5-20R Duplex, Ivory  
**SR:** NEMA 5-20 Single, Red  
**TB:** 2300HG, Twist-to-lock, Black

- 4 Quantity of receptacles\***  
**0:** Zero      **2:** Two      **4:** Four

\* NOTE: The total quantity of ground jacks and receptacles must be eight (8) or less. Contact a representative for additional configurations.

### GPM Common Configurations

Part No.	Description	Article Number
GPM-F4DR4	(4) 30A/250V- Green Ground Jacks (4) 20A/125V- Red Duplex Receptacles	B521300405
GPM-F4NN0	(4) 30A/250V- Green Ground Jacks	B521300349
GPM-F0NN0	Ground bus w/ min. of 20 connections only	B521300400
B120804	GPM backbox only , flush mounted 12"W x 8"H x 4"D	B521300367

\* **NOTE:** Includes 14" x 10" 304SS #4 brushed finish trim and Ground bus w/ min. of 20 connections. The front trim for surface mounted modules has the same dimensions as the backbox.



GPM-P4DR4

## Product Description

Compatible with BENDER's Modular Isolation Power Panels, the panel mounted ground power modules offer a convenient and cost-effective solution for integrating receptacle and/or ground jacks into an operating room.

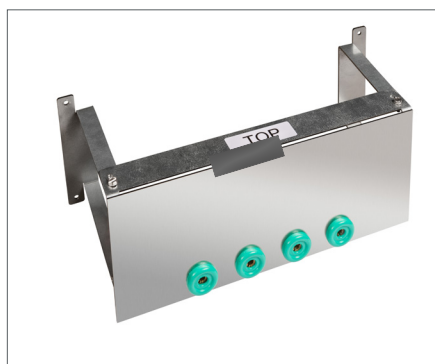
This series of ground power modules may be integrated within a modular isolation power panel upon ordering or field installed post-installation. Field upgradeability eliminates the need for wall deconstruction thereby reducing downtime. Panel mounted GPM's will come pre-wired for an effective time-saving installation.

Ground and power modules are designed in strict compliance with **UL467**, **UL50**, the **NFPA 70** (National Electric Code), and **NFPA 99**.

### Panel Compatibility

- MIP / MIE Series Isolation Power Panels
- MID Series Dual Voltage Power Panels
- MIX Series Dual System Power Panels

\*Not compatible with MIC series X-Ray/Laser Receptacle Panels



GPMP-4NN0

## Applications

- Wet Procedure Locations
- Coronary Care or Intensive Care Ward
- Operating Rooms
- Any location where Isolation Power Panels are used

## Features

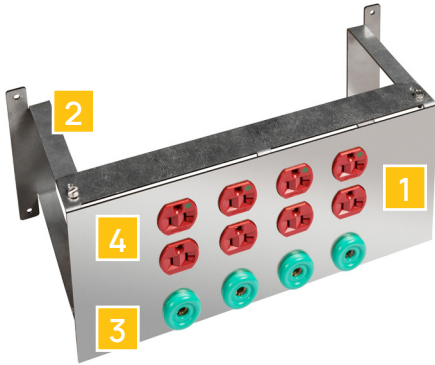
- Various receptacle and/or ground jack options
- 20 to 60 Amp rated receptacles available
- 304 Stainless Steel Brushed Finish
- Field replaceable receptables/ ground jacks
- Custom configurations available upon request



MIP Isolation Panel

## What's Included

(Example Part Number: GPM-P4DR4)



1. Stainless steel faceplate, 14 GA, #4 brushed finish
2. Faceplate mounting bracket
3. Hospital grade, Twist to lock, 30A Ground jacks
4. Hospital grade, NEMA #5-20R Duplex receptacle

## Ordering Information



- 1 Mounting Type P or D**  
**P:** Panel Mount - (MIP, MIX)  
**D:** Panel Mount - (MIE, MID)

- 2 Quantity of Ground Jacks**  
**0:** Zero           **6:** Six  
**2:** Two           **8:** Eight  
**4:** Four

- 3 Receptacle Type**  
**NN:** No Receptacles           **Y1:** Hubbell #IN16494  
**DR:** NEMA 5-20R Duplex, Red   **Y4:** NEMA #630R  
**SI:** NEMA 5-20R Single, Ivory   **Y5:** NEMA #650R  
**DI:** NEMA 5-20R Duplex, Ivory   **Y8:** NEMA #L630R  
**SR:** NEMA 5-20 Single, Red       **Y9:** Hubbel CS8269  
**TB:** 2300HG, Twist-to-lock, Black

- 4 Quantity of receptacles\***  
**0:** Zero           **4:** Four  
**2:** Two

### Mounting type P

Total quantity of Ground Jacks cannot exceed 6. Total quantity of Receptacles cannot exceed 4.

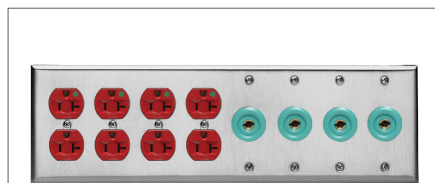
### Mounting type D

Total quantity of Ground Jacks cannot exceed 8. Any combination of receptacles cannot exceed 8. If there is a combination of HV and LV receptacles, total quantity of LV Receptacles cannot exceed 6. Only up to 2 HV receptables can be selected. Contact a representative for additional configurations.

### GPM Common Configurations

Part No.	Description	Article Number
GPM-P4DR4	(4) 30A/250V- Green Ground Jacks (4) 20A/125V- Red Duplex Receptacles	-
GPM-D4DR4	(4) 30A/250V- Green Ground Jacks (4) 20A/125V- Red Duplex Receptacles	-
GPM-F0NN0	Ground bus w/ min. of 20 connections only	-

**\* NOTE:** Module comes pre-wired from factory and includes mounting brackets.



GPM-G4DR4

## Product Description

In addition to wall-mount and panel mounted GPM options, BENDER also offers gang-plate mounted options for easy installation in existing gang-plate applications. Gang plate GPM's can be mounted to replace existing receptacle and/or light switches and can be installed virtually anywhere. Gang plate mounted options are also ideal for those looking for a minimal installation with the least amount of construction downtime.

Ground and power modules are designed in strict compliance with **UL467**, **UL50**, the **NFPA 70** (National Electric Code), and **NFPA 99**.

The gang-plates are constructed with stainless steel material and a brushed finish to suit the aesthetics of a clean healthcare facility. The plates will come with pre-cut holes and factory installed receptacles and/or ground jacks. Different gang plate assemblies with various receptacle configurations can also be installed at a later time.



GPM-G4TB4

Bender offers a wide range of NEMA rated, hospital grade receptacles and/or ground jacks to meet your power requirements. Options range from single, duplex, and high voltage receptacle with amperage ranged up to 60 Amps.

## Applications

- Wet Procedure Locations
- Coronary Care or Intensive Care Ward
- Operating Rooms
- Any location where Isolation Power Panels are used



GPM-G4NN0

## Features

- Various receptacle and/or ground jack options
- 20 to 60 Amp rated receptacles available
- Stainless Steel Brushed Finish
- Plate options up to 8 gang.
- Easy installation into existing gang boxes
- Minimum construction for new installations
- Field replaceable receptables/ ground jacks
- Custom configurations available upon request

### What's Included

(Example Part Number: GPM-G4DR4)



1. Stainless steel wall plate, #4 brushed finish, 8-gang
2. Hospital grade, Twist to lock, 30A Ground jacks
3. Hospital grade, NEMA #5-20R Duplex receptacle

\*Note: Gang Box not supplied

### Ordering Information



**1** Mounting Type F or S  
G: Gang plate

**2** Quantity of Ground Jacks  
0: Zero            6: Six  
2: Two            8: Eight  
4: Four

**3** Receptacle Type  
NN: No receptacles  
SR: NEMA 5-20R Single, RED  
SI: NEMA 5-20R Single, IVORY  
DR: NEMA 5-20R Duplex, RED  
DI: NEMA 5-20R Duplex, IVORY  
TB: 2300HG, Twist-to-lock, BLACK

**4** Quantity of receptacles\*  
0: Zero            4: Four            8: Eight  
2: Two            6: Six

#### GPM Common Configurations (Module does not include gang box)

Part No.	Description	Article Number
GPM-G4NN0	4-gang, w/ (4) 30A/250V- Green Ground Jacks	B521301103
GPM-G4DR4	8-gang, w/ (4) 30A/250V- Green Ground Jacks & (4) 20A/125V- Red Duplex Receptacles	B521300408

\* **NOTE:** The total quantity of ground jacks and receptacles must be eight (8) or less. Module does not include gang box. Contact a representative for additional configurations.

## Accessories: Hospital Grade Ground Cords



HGC-10L



HGC-10C



HGJ-1R

### Product Description

Bender's Hospital grade ground cords (HGC) ensures that portable equipment inside critical care areas are properly grounded. Our HGCs come in two types of end connections: Heavy Duty clip and lug and they can be manufacture in various length (upon request) in order to meet the specific healthcare facility requirements. Hospital grade ground cords are designed and listed in strict compliance with UL467.

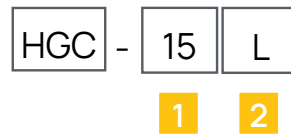
### Applications

- Wet Procedure Locations
- Coronary Care or Intensive Care Ward
- Operating Rooms
- Any location where Isolation Power Panels are used

### Features

- All configurations use highly flexible wire
- Available cable-end options: Alligator/Heavy duty clip or lug for #10 stud
- Various lengths available upon request

### Ordering Information



- 1 Cable length**  
 10: 10 feet  
 15: 15 feet

- 2 Cable end termination**  
 C: Heavy duty clip on one end, plug on other  
 L: Lug on one end, plug on the other

\* **NOTE:** Contact a representative for additional configurations.

### Hospital Grade Ground Cords Common configurations

Part No.	Description	Article No.
HGC-10L	10 ft, with Plug & Lug for #10 Stud	B 5213 00053
HGC-15L	15 ft, with Plug & Lug for #10 Stud	B 5213 00009
HGC-10C	10 ft, with Plug & Heavy Duty Clip	B 5213 01101
HGC-15C	15 ft, with Plug & Heavy Duty Clip	B 5213 00047
Hospital Grade Ground Jacks		
HGJ-1R	Hospital Grade Ground Jack 30A/250V - Green	B 5213 00010





**Bender Inc.**  
420 Eagleview Blvd.  
Exton, PA  
19341

Tel.: +1 610-383-9200  
sales@bender-us.com  
www.benderinc.com

**Bender Canada**  
5810 Ambler Dr. Unit 1  
Mississauga, ON  
L4W 4J5

Tel.: +1 905-602-9990  
sales@bender-ca.com  
www.benderinc.com

**Bender Mexico**  
Av. Santa Fe 170, Interior 6-4-22,  
Santa Fe, Alvaro Obregón  
01210 México

Tel.: +52 55 7916 2799  
info@bender.com.mx  
www.bender.com.mx

